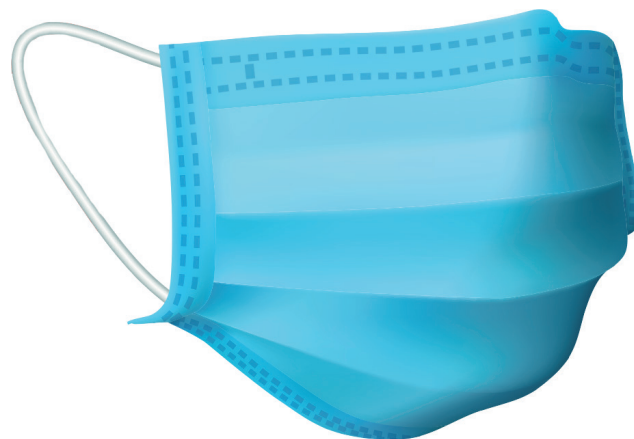


NANO

MED·CLEAN



SURGICAL FACE MASK

Disposable. Risk of contamination with repeated use.

Filtration efficiency of **99,9 %** against viruses and bacteria.

Instructions for use:

How to put on a face mask with ear loops:

1. Wash and dry your hands with soap and water or hand sanitizer before touching the mask.
2. Remove the mask from the box.
3. The side of the mask that has a stiff bendable edge is the top.
4. Hold the mask by the ear loops. Place a loop around each ear.
5. Mould the stiff edge to the shape of your nose.
6. Pull the bottom of the mask over your mouth and chin.
7. Don't touch the mask while wearing in.



How to remove a mask with ear loops:

1. Wash and dry your hands before touching the mask.
2. Avoid touching the front of the mask that can be contaminated. Touch only the ear loops.
3. Hold both of the ear loops and gently lift and remove the mask.
4. Throw the mask in the trash.
5. Clean your hands with soap and water or hand sanitizer.

